

# SURGICAL WORKFLOW

## IMMEDIATE PROTOCOL: DENTULOUS

### CHAIRSIDE CHECKLIST

#### PRE-OP APPOINTMENT (2 Weeks Prior to Surgery)

**PRE-OP TOTAL:**  
SINGLE/DUAL ARCH:  
2 PHOTOS, 3 SCANS

#### PHOTOS REQUIRED

- Upright, Full-Face Relaxed Bite Smile
- Upright, Full-Face Relaxed Bite Smile + Retractors

#### FOUNDATION SCANS - EXISTING DENTITION



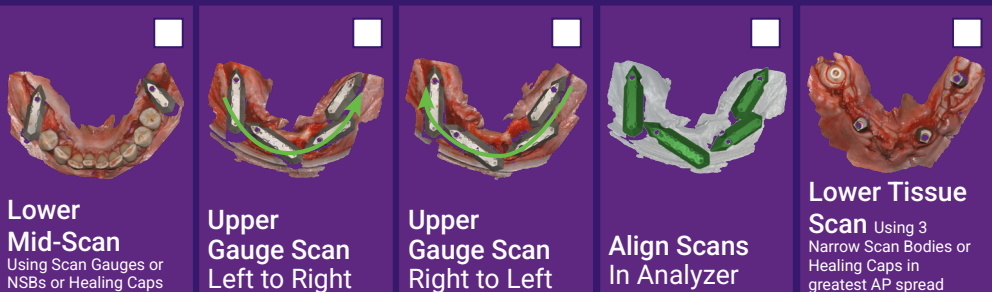
#### SURGERY DAY

##### UPPER ARCH

**SURGERY DAY TOTAL:**  
SINGLE ARCH: 4 SCANS  
DUAL ARCH: 8 SCANS



##### LOWER ARCH



Note: When exporting finalised scans, please export as STL files.

# SURGICAL WORKFLOW

## IMMEDIATE PROTOCOL: EDENTULOUS

### CHAIRSIDE CHECKLIST

**PRE-OP APPOINTMENT** (2 Weeks Prior to Surgery)

**PHOTOS REQUIRED**

**PRE-OP TOTAL:**  
SINGLE/DUAL ARCH:  
2 PHOTOS, 3 SCANS

- Upright, Full-Face Relaxed Bite Smile, with Wash
- Upright, Full-Face Relaxed Bite Smile, with Wash + Retractors

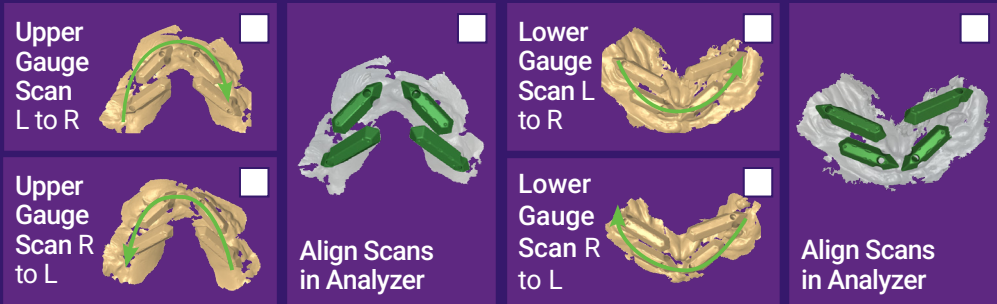
**FOUNDATION SCANS** with Wash Impression



### SURGERY DAY

**IMPLANT DATA ACQUISITION**

**SURGERY DAY TOTAL:**  
SINGLE ARCH: 2 PHOTOS, 5 SCANS  
DUAL ARCH: 2 PHOTOS, 7 SCANS



**PHOTOS REQUIRED**

- Upright, Full-Face Relaxed Bite Smile, with Wash
- Upright, Full-Face Relaxed Bite Smile, with Wash + Retractors

**SURGICAL SCAN TEMPLATE (SST) SCANS** - with Wash Impression



Note: When exporting finalised scans, please export as STL files.

### CHAIRSIDE CHECKLIST ONE APPOINTMENT

TOTAL SCANS:

SINGLE ARCH: 2 PHOTOS, 7 SCANS

DUAL ARCH: 2 PHOTOS, 11 SCANS

#### PHOTOS REQUIRED

- Upright, Full-Face Relaxed Bite Smile
- Upright, Full-Face Relaxed Bite Smile + Retractors

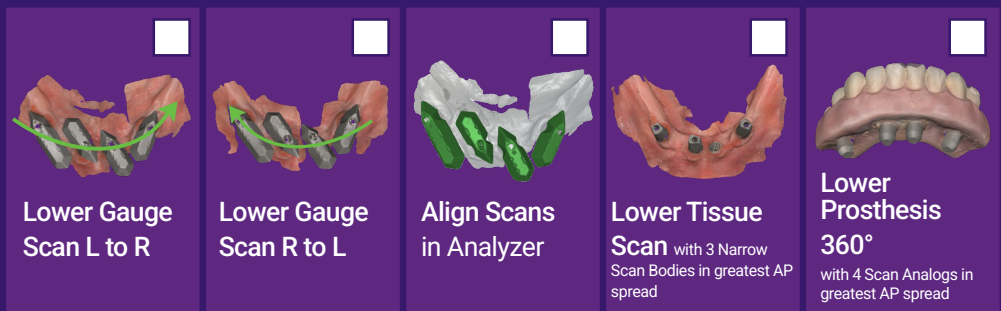
#### FOUNDATION SCANS - WITH EXISTING PROSTHESIS



#### UPPER ARCH



#### LOWER ARCH



Note: When exporting finalised scans, please export as STL files.

## CHAIRSIDE CHECKLIST

### ONE APPOINTMENT

#### TOTAL SCANS:

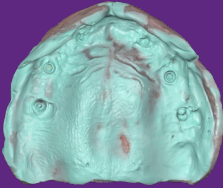
SINGLE ARCH: 2 PHOTOS, 6 SCANS

DUAL ARCH: 2 PHOTOS, 9 SCANS

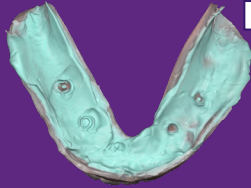
#### PHOTOS REQUIRED

- Upright, Full-Face Relaxed Bite Smile, with Wash Upright,
- Full-Face Relaxed Bite Smile, with Wash + Retractors

#### FOUNDATION SCANS - DENTURE - with Wash Impression



Upper Denture 360°  
or upper dentition

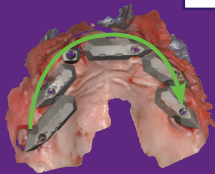


Lower Denture 360°  
or lower dentition

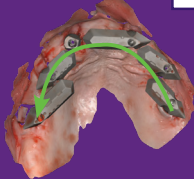


Bite Scan with  
wash impression

#### UPPER ARCH



Upper  
Gauge Scan  
Left to Right



Upper  
Gauge Scan  
Right to Left



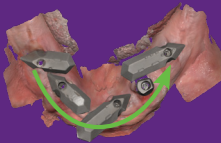
Align Gauge  
Scans in  
Analyzer



Upper  
Tissue Scan

with 3 Narrow Scan Bodies  
in greatest AP spread

#### LOWER ARCH



Lower  
Gauge Scan  
Left to Right



Lower  
Gauge Scan  
Right to Left



Align Gauge  
Scans in  
Analyzer



Lower  
Tissue Scan with 3  
Narrow Scan Bodies in  
greatest AP spread

Note: When exporting finalised scans, please export as STL files.